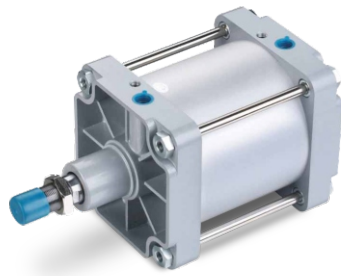
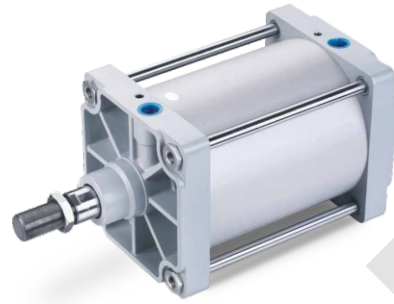


DNG Series ISO15552 Standard Cylinder



DNG 200 x 100-S



DNG 250 x 200-S

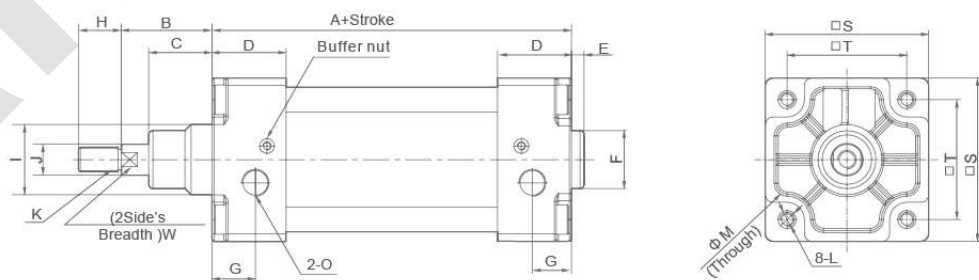
Ordering Code

DNG	160	×	100	-	25	-	S	-	□
Series Code	Cylinder Bore		Stroke		Adjust Stroke		Magnet Code		Fixed Type
DNG:ISO15552 Standard Double Action Type DNGD:ISO15552 Standard Two Axis Double Action Type DNGJ:ISO15552 Two Axis Stroke Adjust Type	160mm-320mm				25: 25mm 50: 50mm 75: 75mm		Blank: Without Magnet S: With Magnet		Blank:Normal type LB:Front and back fixed type FA:Front cover fixed type(Front flange type) FB:Back cover fixed type(Back flange type) CA:Back cover fixed type (Single earring) CB:Back cover fixed type(Double earring)

Specification

Bore(mm)	160	200	250	320
Motion Pattern	Double Action			
Working Medium	Air			
Fixed Type	Normal type FA type FB type CA type CB type LB type TC type			
Working Pressure Range	0.1~1.0MPa			
Ensured Pressure Resistance	1.5MPa			
Operating Temperature Range	-5~60℃			
Operating Speed Range	50~500mm/s			
Buffer Type	Adjustable Buffer			
Port Size	G3/4"		G1"	
Lubrication	Not required (Use Turbine oil ISO Vg32 when necessary)			

Overall Dimensions



Dimension Sheet

Bore/Symbol	A	B	C	D	E	F	G	H	I	J	K	L	M	S	T	O
160	180	80	60	50	6	Φ65	25	72	Φ65	40	M36×2	M16	Φ25 dp30	180	140	G3/4"
200	180	95	70	50	6	Φ75	25	72	Φ75	40	M36×2	M16	Φ25 dp30	220	175	G3/4"
250	200	105	67	52	10	Φ90	31	84	Φ90	50	M42×2	M20	Φ30	270	220	G1"
320	218	120	82	52	10	Φ110	31	96	Φ110	63	M48×2	M24	Φ34	340	270	G1"